

Substantial churning in the labor market is observed, particularly among workers in non-farm household enterprises

Source

Districts with declining EVD rates did not see more people re-entering the workforce

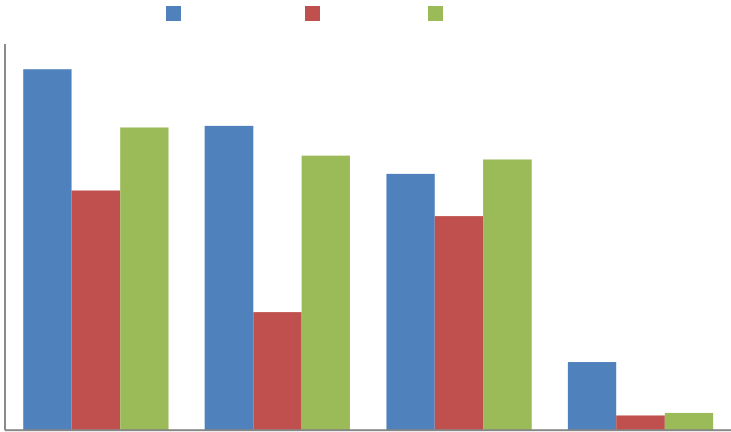
The percent of households receiving remittances remained unchanged although the value of these remittances rose.

Source

Food distribution since the outbreak intensified was mostly carried out by non-governmental organizations.

The poor are less likely to receive assistance than the non-poor in other urban areas.

There have been significant increases in utilization of health clinics for maternal care since November.



Source

Radio

Knowledge of Ebola

Earnings

Migration

Employment Definition

Calculation for monthly wage earnings

Correction of outliers in household enterprise revenues

Pregnancy definitions in the DHS -

Table A1: Geographical Distribution of LFS and Sample

Labor Force Survey	% of LFS Found in Nov 2014	% of LFS Found in Jan-Feb 2015
--------------------	-------------------------------	-----------------------------------

Table A3: Employment Status Distribution of LFS and Sample
